

See more online
www.mydentalstock.com

Contact Us
nexusmedodent@gmail.com

NEXUS MEDODENT

8/9, Manisha Heights, B.R. Road, Before Vaishali Nagar, Mulund (W), Mumbai - 400 080
Tel: 022-21644967



HANDPIECE PARTS



CONTENTS >>



▶ Low Speed Handpiece Parts	3
◦ Contra Angle Head	3
◦ Contra Angle Body	5
◦ Rotors And Gears For Contra Angle	6
▶ High Speed Handpiece Parts	10
◦ High Speed Rotors	10
◦ Washer & Dam	13
◦ Auto Chuck Spindles	13
◦ Impeller	15
◦ Handpiece Caps	16
▶ Dental Bearings	18
◦ High Speed Bearings	18
◦ Low Speed Bearings	19
▶ Handpiece Bulbs	20
▶ Connector	21
▶ Oring & Gasket	22
▶ Handpiece Tubes & Cable	22
▶ Dental Carbon Brush	23
▶ Repairing Tools	23
◦ Tech Tools	24
◦ Wrench & Expander	25
▶ Spray Nose For Handpiece Lubricating	27
▶ Scaler Parts	28
◦ Scaler Handpiece & Cable	28
◦ Scaling Tips	29
▶ Surgery Inserts	29
▶ Dental Unit Parts	38

All the Brands mentioned here in the catalog are for reference and compatibility type only, we do not sell original make of the mentioned brands nor we represent them, this is just for compatibility reference. All our spare parts are high quality parts for giving you longer life for your equipment's.



KAVO, NSK, W&H, SIRONA, BIEN AIR, MIDWEST, STAR, SAESHINE, MARATHON, ETC



Replacement For Kavo 68LH
Model : RT-H68L
 Maximum 40,000rpm , RA2.35mm Burs
 Build With Germany Bearings



Model: RT-H67L-1
 Compatible With: Kavo 67LH



Model: RT-H68L-1
 Compatible With: Kavo 68LDN



Model: RT-H69L-1
 Compatible With: Kavo 69LH

Photo	Model Number	Type	Burs	Max Speed (rpm)	Suitable For
	RT-H67L	Push Button	RA burs (Ø2.35mm)	40,000	Kavo 67LH
	RT-H68	Push Button	RA burs (Ø2.35mm)	40,000	Kavo 68LDN
	RT-H69	Push Button	RA burs (Ø2.35mm)	40,000	Kavo 69G
	RT-CA-1	Swing Latch	RA burs (Ø2.35mm)	28,000	NSK Nacy / Star
	RT-CAB-1	Swing Latch	RA burs (Ø2.35mm)	40,000	NSK BB-Y / Star
	RT-CAPS-1	Push Button	FG burs (Ø1.60mm)	40,000	NSK / Star
	RT-CAMP-1	Push Button	RA burs (Ø2.35mm)	28,000	NSK / Endo Mate
	RT-CAM-1	Swing Latch	RA burs (Ø2.35mm)	28,000	NSK / Star
	RT-CAFPB	Push Button	RA burs (Ø2.35mm)	40,000	NSK FPB-Y / Star

-3-

Photo	Model Number	Type	Burs	Max Speed (rpm)	Suitable For
	RT-CAUD	Twist (Up & Down)	Burs (Ø2.35mm)	/	NSK
	RT-CA10P-1	Twist (Quarter Turn)	Hand use files	40,000	NSK / Star
	RT-H25	Push Button	RA burs (Ø2.35mm)	40,000	NSK S-Max M2SL/M25
	RT-H20	Push Button	RA burs (Ø2.35mm)	20,000	NSK S-Max S520
	RT-H95	Push Button	RA burs (Ø2.35mm)	200,000	NSK S-Max M9SL/M95
	RT-H58W	Swing Latch	RA burs (Ø2.35mm)	40,000	W&H RC-58
	CA-ST	/	/	/	Star
	ST-CA235	Swing Latch	RA burs (Ø2.35mm)	28,000	Star
	ST-CAB	Swing Latch	RA burs (Ø2.35mm)	40,000	Star
	ST-CAP235	Push Button	RA burs (Ø2.35mm)	40,000	Star
	ST-CAP160	Push Button	FG burs (Ø1.60mm)	40,000	Star
	ST-CAM	Swing Latch	RA burs (Ø2.35mm)	28,000	Star
	ST-CAMP	Push Button	RA burs (Ø2.35mm)	28,000	Star
	MW-CA	Swing Latch	RA burs (Ø2.35mm)	28,000	Midwest
	MW-CAB	Swing Latch	RA burs (Ø2.35mm)	40,000	Midwest

-4-

CONTRA-ANGLES >> HEAD

Photo	Model Number	Type	Burs	Max Speed (rpm)	Suitable For
	MW-LAP	Push Button	RA burs (Ø2.35mm)	40,000	Midwest
	MW-CAPS	Push Button	FG burs (Ø1.60mm)	40,000	Midwest
	MW-CAMP	Push Button	RA burs (Ø2.35mm)	28,000	Midwest
	MW-CAM	Swing Latch	RA burs (Ø2.35mm)	28,000	Midwest
	RT-HATG	Swing Latch	RA burs (Ø2.35mm)	15,000	Anthogyr Implant
	RT-N25	Push Button	RA burs (Ø2.35mm)	15,000	Seashine Implant
	DS-CA	Push Button	RA burs (Ø2.35mm)	25,000	Dentsply Endo

DRIVING ATTACHMENT >>

Order No.	CA1	CA4	CA10	CA6	CA20	CA64	CA8W
Gear Ratio	1:1 Direct Drive	4:1 Reduction	10:1 Reduction	16:1 Reduction	20:1 Reduction	64:1 Reduction	1:1 Direct Drive
Suitable For	NSK	NSK	NSK	NSK	NSK	NSK	W&H

-5-

ROTORS AND GEARS



CONTRA-ANGLES >> ROTORS AND GEARS

Photo	Model Number	Suitable For	Photo	Model Number	Suitable For
	RT-R2SLP	Kavo 2SLP		RT-HGSL	Kavo 68G / 68C
	RT-R68LH	Kavo 68LH		RT-HGSLB	Kavo 68G / 68C (Bearing Type)
	RT-R68LDN	Kavo 68LDN		RT-RCL3	Kavo CL3
	RT-R67LH	Kavo 67LH			

-6-

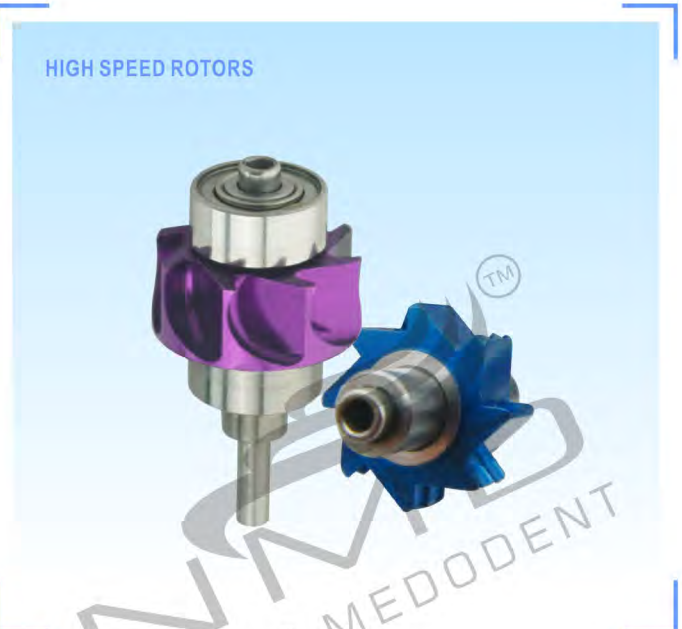
Photo	Model Number	Suitable For	Photo	Model Number	Suitable For
	RT02-CA-3	NSK NAC-Y		RT02-CAB-3	NSK BB-Y
	RT02-10P-3	NSK Twist Endo		RT-RFPB	NSK FPB-Y
	RT02-CAMP-3	NSK MP-Y Endo Mate		RT-R25N	NSK S-Max M25L / M25
	RT-NK20-3	NSK S-Max SG20 Implant		RT-R95M	NSK S-Max M95L / M95
	RT-R56	W&H WE-56		RT-R56A	W&H WA-56 4*7*1.6mm bearings
	RT-R50D	W&H WD-56 with the cap		RT-R75	W&H WI-75
	RT-R56L	W&H WE-56 LED G		RT-R75A	W&H WS-75
	RT-R58	W&H RC-58 Sinol 58E		RT-R75B	W&H WS-75
	RT-RT2L	Sirona T2 Line		RT-R8A	Bien Air CA 1:1
	RT-RT2R	Sirona T2 Ravo		RT02-CAP-3	Some Chinese Contra Angle Push Button RA Burs
	RT-RN25	Saeshin Implant		RT02-CAPS-3	Some Chinese Contra Angle Push Button FG Burs
	RT-HG68LH	Kavo 68LH		RT-HG68LDN	Kavo 68LDN
	RT-HG67	Kavo 67LH		RT-HG75	Head Gear For W&H Implant
	RT-N21	NSK SGM-ER16 / ER20		RT-HGFPB	NSK FPB-Y Ti-Max T25L

Photo	Model Number	Suitable For	Photo	Model Number	Suitable For
	RT-CA-4	NSK NAC-Y, BB-Y, FPB-Y Gear to body		RT-CA-9	NSK NAC-Y, BB-Y Gear to rotor
	RT-CA10P-9	NSK Twist Contra Angle Gear to rotor		RT-MGFPB-1	NSK FPB-Y, Gear to rotor
	RT-MG56-1	W&H WE-56 Gear to body		RT-MG58-1	W&H WE-56 Gear to rotor
	RT-MG25M-1	NSK S-Max M25 / M25L		RT-MG58-1	W&H RC-58 Sinol 58E
	RT-MG75-1	W&H WS-75 NSK S-Max SG20		RT-G68	Kavo 68LH / 68LDN / 68G / 52LDN
	RT-CA-2	NSK NAC-Y, BB-Y		RT-CA-10	NSK NAC-EC
	RT-CA10P-2	NSK Twist Contra Angle		RT-CAMP-2	NSK MP-Y, Endo Mate
	RT-NK20-2	NSK S-Max SG20 Implant Handpiece		RT-N20	NSK SGM-ER16 / ER20
	RT-MGFPB	NSK FPB-Y		RT-MG25M	NSK S-Max M25 / M25L
	RT-MG35M	NSK Ti-Max X35 / X35L 1:5 Contra Angle		RT-MG25Ti	Middle Gear For NSK Ti-25
	RT-MG56	W&H WE-56		RT-MG58	W&H RC-58 Sinol 58E
	RT-MG75	W&H WS-75		RT-MG75A	W&H WS-75
	RT-MG75B	W&H WS-75		RT-MG67	Kavo 67LH Kavo GL3
	RT-MG68	Kavo 68LH / 68LDN / 68G / 52LDN		RT-MG68K	Kavo 68C / 68G

CONTRA-ANGLES >> GENERAL ACCESSORIES >> GEARS

Photo	Model Number	Suitable For	Photo	Model Number	Suitable For
	RT-MGT2L	Middle Gear For Sirona T2 Line		RT-MGT2R	Middle Gear For Sirona T2 REVO
	RT-MG8A	Middle Gear For Bien Air CA 1:1		RT-N25-1	Saeshin Implant Contra Angle
	RT-NK20-3A	NSK S-Max Rotor Lower		RT-CA58-11	W&H RC-58 Sinol 58E
	RT-NK20-3B	NSK S-Max Rotor Upper		RT-CA58-12	W&H RC-58 Sinol 58E
	RT-CA-11	NSK NAC-Y		RT-M10	Air Motor
	RT-N18	NSK SGM-ER16 / ER20		RT-N19	NSK SGM-ER16 / ER20
	RT-HG56-1	W&H Contra Angle		RT-HG56-2	W&H RC-58 Sinol 58E
	RT-HG75-1	Sliding Latch For W&H Implant Head Gear		RT-DA58-10	W&H RC-58 Sinol 58E
	RT-CA58-13	W&H RC-58 Sinol 58E		RT-HG679	Kavo Push Button Contra Angle
	RT-MG68-06	Kavo Middle Gear		RT-MG68-07	Kavo Middle Gear
	RT-MG68K-06	Kavo 68C / 68G		RT-CA-14	NSK NAC-Y
	RT-CA58-14	W&H RC-58 Sinol 58E		RT-K68G	Bur Latch

HIGH SPEED ROTORS



HIGH SPEED PART >> HIGH SPEED ROTORS

Photo	Model Number	Suitable For	Photo	Model Number	Suitable For
	RT-R680	Kavo E680		RT-R677	Kavo E677
	RT-RC00	NSK CH-00 CH 45 CH-SU03		RT-RMGD	NSK Mach-00, Mach Light CMC-SU03
	RT-RM500	NSK S-Max M500 SX-MU03		RT-RM600	NSK S-Max M600 SX-SU03

Photo	Model Number	Suitable For	Photo	Model Number	Suitable For
	RT-RX600 RT-RX500	NSK X600L Tix-SU03 NSK X500L Tix-MU03		RT-RX700	NSK X700L Tix-TU03
	RT-RMAX	NSK Pana Max Standard PAX-SU03		RT-RMAXL	NSK Pana Max Torque Pax-TU03
	RT-RMAX2	NSK Pana Max 2 PAX2-SU03		RT-RPA (Better Model)	NSK Pana Air Standard PNA-SU03
	NK-R01 (Economic Model)	NSK Pana Air Standard PNA-SU03 (Push)		NK-R02	NSK Pana Air Torque PNA-TU03 (Push)
	NK-R03	NSK Pana Air Mini PNA-MU03 (Push)		NK-R04 (Economic Model)	NSK Pana Air Standard PNA-S03 (Wrench)
	NK-R05	NSK Pana Air Torque PNA-T03 (Wrench)		NK-R06	NSK Pana Air Mini PNA-M03 (Wrench)
	RT-RP2	NSK Presto Aqua		RT-R95	W&H Trend TC-95 BC
	RT-R95C	W&H RC-95 RM		RT-R96	W&H TA-96
	RT-R98	W&H TA-98		RT-R98L	W&H TA-98 LED
	RT-R637	Kavo 637		RT-R640	Kavo 640
	RT-R642	Kavo 642		RT-R605 RT-R648	Kavo 605 Kavo 648
	RT-R650	Kavo 650		RT-R655	Kavo 655 / 660
	RT-R5000	Kavo 5000		RT-R7000	Kavo 7000
	RT-R8000	Kavo 8000		RT-R430	Star 430
	RT-RT23	Sirona T2 / T3 Racer		RT-RT3M	Sirona T3 Mini
	RT-RBP	Bien Air Black Pearl		RT-RBORA	Bien Air Bora
	RT-RSINOL	Sincol AD		RT-RMWT	Midwest Fractional

Photo	Model Number	Suitable For	Photo	Model Number	Suitable For
	RT-SA600	NSK Ti-Max X600L		RT-SAX700	NSK Ti-Max X700, X700L
	RT-SAMAX	Pana Max Standard Pax-SU03		RT-SAMAXL	Pana Max Torque Pax-TU03
	RT-SA95	W&H Trend TC-95BC		RT-SA95C	W&H RC-95 RM
	RT-SA96	W&H TA-96		RT-SA98	W&H TA-98
	RT-SA98L	W&H TA-98 LED		RT-SA937	Kavo 637
	RT-SA640	Kavo 640		RT-SA642	Kavo 642
	RT-SA648 RT-SA625	Kavo 648 Kavo 625		RT-SA650	Kavo 650
	RT-SA655	Kavo 655 / 660		RT-SA680	Kavo 680L
	RT-SA5000	Kavo 5000 / 5077		RT-SA7000	Kavo 7000
	RT-SA8000	Kavo 8000		RT-SAT23	Sirona T2 / T3 Racer
	RT-SAT3M	Sirona T3 Mini		RT-SABP	Bien Air Black Pearl
	RT-SABORA	Bien Air Bora		RT-SA430	Star 430
	RT-SASINOL	Sincol AD		RT-SAY	Yosida Big Head
	RT-SAYM	Yosida Small Head		RT-SAMWT	Midwest
	RT-AD637	Kavo 637		RT-AD650	Kavo 650
	RT-AD8000	Kavo 8000		RT-AD600	NSK Ti-Max X600 / X700
	NK-C05	NSK Pana-Max Air Dam		NK-C05	NSK Pana-Max Bearing Seat
	RT-W04	0.35mm Dam		RT-W05	0.10mm Thickness

Photo	Model Number	Suitable For	Photo	Model Number	Suitable For
	RT-W06	NSK / Any		RT-W07	Bien Air
	RT-W08	NSK / Kavo W&H / Sirona		RT-W09	NSK / W&H / Sirona Contra Angle
	RT-W10	W&H RC-95 RM		RT-W01	0.40mm Dam

Photo	Model Number	Total Length	Type	Suitable For
	RT-1170F	13.65 mm	Friction Grip	Kavo
	RT-1365F	13.65 mm	Friction Grip	Kavo
	RT-1240S	12.40 mm	Wrench Type	NSK
	RT-1330S	13.30 mm	Wrench Type	NSK W&H
	RT-1365S-1	/	Wrench Type	NSK Standard Chuck
	RT-1240S-1	/	Wrench Type	NSK Torque Chuck
	RT-1136S-1	/	Wrench Type	NSK Mini chuck
	JT-201M / JT-201S	12.35mm / 3.61mm, 3.175mm	/	Marathan Seeshin
	JT-202	/	/	Quarter Chuck For High Speed Cutting Machine
	RT-PR2-1	/	Friction Grip	NSK Presto Aqua
	RT-PR2-2	/	Friction Grip	NSK Presto Aqua
	RT-013C	/	Adapter	1.60 mm burr use in 2.35 mm chuck
	RT-0001	/	/	False Bur / Testing Bur

Photo	Model Number	Suitable For	Photo	Model Number	Suitable For
	RT-W06	NSK / Any		RT-W07	Bien Air
	RT-W08	NSK / Kavo W&H / Sirona		RT-W09	NSK / W&H / Sirona Contra Angle
	RT-W10	W&H RC-95 RM		RT-W01	0.40mm Dam

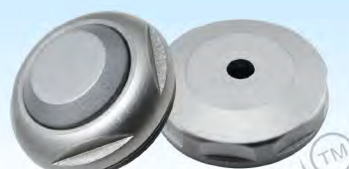
Photo	Model Number	Total Length	Type	Suitable For
	RT-1170F	13.65 mm	Friction Grip	Kavo
	RT-1365F	13.65 mm	Friction Grip	Kavo
	RT-1240S	12.40 mm	Wrench Type	NSK
	RT-1330S	13.30 mm	Wrench Type	NSK W&H
	RT-1365S-1	/	Wrench Type	NSK Standard Chuck
	RT-1240S-1	/	Wrench Type	NSK Torque Chuck
	RT-1136S-1	/	Wrench Type	NSK Mini chuck
	JT-201M / JT-201S	12.35mm / 3.61mm, 3.175mm	/	Marathan Seeshin
	JT-202	/	/	Quarter Chuck For High Speed Cutting Machine
	RT-PR2-1	/	Friction Grip	NSK Presto Aqua
	RT-PR2-2	/	Friction Grip	NSK Presto Aqua
	RT-013C	/	Adapter	1.60 mm burr use in 2.35 mm chuck
	RT-0001	/	/	False Bur / Testing Bur



Photo	Model Number	Suitable For	Photo	Model Number	Suitable For
	RT-800	NSK Ti-Max X800L		RT-1700	NSK Ti-Max X700L
	RT-IMAX	NSK Pana Max Standard		RT-IMAXL	NSK Pana Max Torque
	RT-IPANAM	NSK Pana Air Mini		RT-IPANAS	NSK Pana Air Standard
	RT-IPANAL	NSK Pana Air Torque		RT-IWT	W&H Top Air
	RT-155	W&H Trend TC-55BC		RT-155C	W&H RC-95 RM
	RT-156	W&H TA-96		RT-157	W&H TA-97
	RT-158	W&H Synma TA-96 W&H Alegria TC-95		RT-158L	W&H TA-98 LED
	RT-605	Kavo 605		RT-637	Kavo 637
	RT-640	Kavo 640 / 650 Ywata Rig Mark1		RT-642	Kavo 642
	RT-646	Kavo 646 / 636		RT-655	Kavo 655 / 600
	RT-15000	Kavo 5000 / 4500		RT-7000	Kavo 7000
	RT-8000	Kavo 8000 / 8500		RT-430	Star 430
	RT-IT23	Sirona T2 / T3		RT-IT3M	Sirona T3 Mini
	RT-IBP	Bien Air Black Pearl		RT-IBORA	Bien Air Bora
	RT-ISINOL	Sinol AD		RT-IMWT	Midwest Traditional

-15-

HANDPIECE CAPS



HIGH SPEED PART >> HANDPIECE CAPS

Photo	Model Number	Suitable For	Photo	Model Number	Suitable For
	RT-CM500	NSK S-Max M500L		RT-CM600	NSK S-Max M600L
	RT-CM200	NSK Mach-QD Mach-Life		RT-CMAX2	NSK Pana Max 2
	RT-C95M	NSK Ti-Max X95 / X95L		RT-CFPB	NSK FPB-Y
	RTB2-CA-5	NSK Nac		RT02-CAMP-5	NSK MP-Y Endo Mate
	RT-NK20-5	NSK S-Max SG20 Implant Handpiece		RT-N22	NSK SGM-ER16i / ER28
	NK-C01	NSK Pana Max Standard / Mini		NK-C01K	NSK Pana Max Standard / Mini
	NK-C02	NSK Pana Max Torque		NK-C02K	NSK Pana Max Torque
	NK-C03	NSK Pana Max Standard		RT-C56	W&H WE-56

-16-

HIGH SPEED PART >> HANDPIECE CAPS

Photo	Model Number	Suitable For	Photo	Model Number	Suitable For
	RT-C56A	W&H WA-56		RT-C56D	W&H WD-56
	RT-C75	W&H WS-75		RT-C95	W&H Trend TC-95 Sinol New AD
	RT-C95C	W&H RC-95		RT-C97E	W&H TE-97
	RT-C98	W&H TA-98		RT-6637	Kavo 635 / 637
	RT-C640	Kavo 640		RT-C650	Kavo 650
	RT-C655	Kavo 655		RT-C5000	Kavo 5000
	RT-C7000	Kavo 7000		RT-C8000	Kavo 8000
	RT-C68LDN	Kavo 68LDN		RT-C68LH	Kavo 68LH / 67LH
	RT-CAD	Sinol AD		RT02-CAP-5	Sinol
	RT-CBP	Bien Air Black Pearl		RT-CBA	Bien Air Contra Angle
	RT-CBORA	Bien Air Bora		RT-CBORA-1	Bien Air Bora
	RT-CBP-1	Bien Air Black Pearl		RT-CBP-2	Bien Air Black Pearl Bien Air Bora
	RT-CT2R	Sirona T2 REV0		RT-CT2L	Sirona T2 Line
	RT-CT23	Sirona T2 / T3 Racer		RT-CT3M	Sirona T3 Mini
	RT-CT3R	Sirona T3 Racer 30 Watt Model		RT-C430	Star 430
	RT-CMWT	Midwest Tradition			Coming more soon...

-17-

HIGH SPEED BEARINGS



All high speed models showed are Ceramic Balls

- Angular Contact : Same as the OEM models, Less noise, More Durable, need experienced technician to install;
- Better Quality: Deep Groove / Radial, easy to install, Life time 9-12 months ;
- Economic: Deep Groove, Life time about 9 months.

Life time maybe too much different according to the using environment and maintaining.

 Model : RT-B001CTA (Angular Contact) RT-B001CP (Better Quality) RT-B001C (Economic) Size : 3.175 × 6.35 × 2.38 mm Suitable For : NSK, Midwest, Kavo 7000 / 8000 Most of Chinese Handpiece	 Model : RT-B002CTA (Angular Contact) RT-B002CP (Better Quality) RT-B002C (Economic) Size : 3.175 × 6.35 / 5.97 × 2.38 / 1.34 mm Suitable For: Siemens (4000, TM1, TS1) Daini-Khanite (Ma50, R5350) Kavo 5000
 Model : RT-B003CTA (Angular Contact) RT-B003CP (Better Quality) RT-B003C (Economic) Size : 3.175 × 6.35 / 7.5 × 2.38 / 0.8 mm Suitable For : NSK Pana Air Mini	 Model : RT-B004CTA (Angular Contact) RT-B004CP (Better Quality) RT-B004C (Economic) Size : 3.175 × 6.35 × 2.78 mm Suitable For: Most Of W&H Handpiece, Sirona T2 / T3, Kavo 655 / 8000, Bien Air Ondine / prestige
 Model : RT-B005CTA (Angular Contact) RT-B005CP (Better Quality) RT-B005C (Economic) Size : 3.175 × 6.35 / 5.97 × 2.78 / 1.78 mm Suitable For : Kavo 640 / 646 / 650 / 642...	 Model : RT-B006CTA (Angular Contact) RT-B006CP (Better Quality) RT-B006C (Economic) Size : 3.175 × 6.35 / 5.97 × 2.78 / 0.8 mm Suitable For : Midwest, Castaline, NSK, Noto
 Model : RT-B007CP (Better Quality) RT-B007C (Economic) Size : 3.175 × 7.938 × 3.571 mm Suitable For: Bien Air Black Pearl Bien Air Bora	 Model : RT-B008CTA (Angular Contact) RT-B008CP (Better Quality) RT-B008C (Economic) Size : 3.175 × 6.35 / 5.97 × 2.78 / 1.78 mm Suitable For: Star
 Model : RT-B009CT (Better Quality) Size : 3.175 × 7.938 × 2.78 mm (step) Suitable For : W&H RC-95 RM	 Model : RT-B010CTA (Angular Contact) Size : 3.175 × 6.45 × 2.750 mm Suitable For: Sirona T3 Racer / T3 Mini
 Model : RT-B011CP (Better Quality) Size : 3.175 × 6.35 × 2.78 mm (step) Suitable For : Kavo 637	 Model : RT-B012CP (Better Quality) Size : 3.175 × 6.35 × 2.782 / 38 mm Suitable For : Kavo 8000 / 677 / 680
 Model : RT-B014CTA (Angular Contact) Size : 3.175 × 6.45 × 2.38 mm (Step) Suitable For : Kavo 600 / 677 / 5000	 Model : RT-B017H (Better Quality) Size : 3.175 / 7.02 0mm Suitable For : Kavo / NSK / W&H Red Angle
 Model : RT-B062H (Better Quality) Size : 3.175 × 6.0 × 2.0 mm Suitable For : Sirona Red Angle	 Model : RT-B042H (Better Quality) Size : 4.0 × 7.0 × 2.0 mm Suitable For : Kavo / NSK / W&H Red Angle

-18-

Photo	Model / Size (mm)	Suitable For	Photo	Model / Size (mm)	Suitable For
	RT-GB8LH 3×7×2.50×3.35	Kavo 6BLH / 6TLH (Made in Germany)		RT-B4104 4×10×4	Saeshin / Marathon OEM 1040ZZ
	RT-B001SL 3.175×6.35×2.38	W&H RC-58 Steel 58E		RT-B4114 4×11×4	Kavo 10-K11-K12 Bien Air MC3
	RT-B004SL 3.175×6.35×2.78	NSK Contra Angle BB-Y		RT-B4216 4×15×16	W&H / Sirona Contra Angle
	RT-B1542 1.5×4×2	For Middle Gear		RT-B552 5×6×2	W&H / NSK / Kavo
	RT-B362 3×6×2	Kavo / W&H / Sirona or any other		RT-B5103 5×10×3	NSK Straight Handpiece
	RT-B372 3×7×2	Kavo / W&H / NSK		RT-B5115 5×11×5	Kavo / W&H / NSK
	RT-B373 3×7×3	Kavo / W&H / any other		RT-B6124 6×12×4	Saeshin / Marathon OEM 1260ZZ
	RT-B383 3×8×3	Electric Motor		RT-B6135 6×13×5	Saeshin / Marathon OEM 1360ZZ
	RT-B384 3×8×4	Saeshin / Marathon OEM 830ZZ		RT-B6147 6.33×12.7×6.762	Saeshin / Marathon OEM 188ZZ
	RT-B5104 5×10×4	Saeshin / Marathon OEM 1050ZZ		RT-B7145 7×14×5	SF 4004 / 4005 260 Blue / Black-LA68
	RT-B3104 3×10×4	Saeshin / Marathon OEM 1030ZZ		RT-B2735 2.38×7.937×3.57	NAC Contra Angle Bearing in the Body NSK Air Motor
	RT-B472 4×7×2	Kavo / W&H / NSK Contra Angle		RT-B8144 8×14×4	Saeshin / Marathon OEM 1480ZZ
	RT-B472L 4×7×2L	W&H / NSK, or any Implant Handpiece		RT-B8164 8×16×4	Any Handpieces Which Are Using The Same Size
	RT-B483 4×8×3	NSK Straight Handpiece		RT-B8166 8×16×6	K9 / K10 Or Any other
	RT-B494 4×9×4	Saeshin / Marathon OEM 540ZZ		RT-B8227 8×22×7	SF 4004 / 4005 Or Any other
	RT-GB10197 10×19×7	Kavo K4-K5		RT-GB71475 7×14×7.5	Kavo K9 / K12 / K4-K5

• Please check more bearing sizes online www.nidodental.com



Photo	Model	Type	Suitable For	Photo	Model	Type	Suitable For
	LED-B	LED	Bien Air Turbine Midwest		LED-NM	LED	NSK Motor
	LED-K	LED	Kavo		LED-MW	LED	Midwest Bien Air Turbine
	LED-S	LED	Sirona		LED-WA	LED	W&H / Adec
	LED-N	LED	NSK Turbine		LED-WB	LED	W&H / Adec
	LED-ST	LED	Star		LED-BM	LED	Bien Air Motor

HANDPIECE BULBS >> XENON BULBS

Photo	Model	Type	Suitable For	Photo	Model	Type	Suitable For
	Lamp-K	Xenon	Kavo		Lamp-B	Xenon	Bien Air Turbine Midwest
	Lamp-S	Xenon	Sirona		Lamp-BM	Xenon	Bien Air Motor
	LAMP-ST	Xenon	Star		Lamp-N	Xenon	NSK Turbine

• The photo show on the catalogue maybe different from the products !

HIGH SPEED >> COUPLING



Model	RT-KM6L	RT-KM4	RT-KCL	RT-KCM4	RT-BAC	RT-SRC	RT-WHC
Suitable For	Kavo	Kavo	Kavo	Kavo	Bien Air	Sirona	W&H
Hole Input							
Light							



Model	NK-CM4	NK-CLED	NK-ECM4	NK-ECB2	RT-013A	RT-013B	RT-077
Suitable For	NSK	NSK	NSK	Kavo			
Hole Input							
Light							

O RING

Photo	Model	Suitable For	Photo	Model	Suitable For
	RT-OR04	7.5 × 0.8 mm NSK Motor, etc.		RT-OR05	6.3 × 0.8 mm W&H, Sirona, NSK etc.
	RT-OR06	6.0 × 1.0 mm Kavo, NSK etc.		RT-OR07	7.8 × 1.0 mm Bien Air, etc.
	RT-OR08	6.1 × 0.8 mm Star, NSK etc.		RT-OR09	6.1 × 7.6 × 7.2 mm Midwest, etc.
	RT-OR04	7.5 × 0.8 mm NSK Motor, etc.		RT-OR05	6.3 × 0.8 mm W&H, Sirona, NSK etc.
	RT-OR06	6.0 × 1.0 mm Kavo, NSK etc.		RT-OR07	7.8 × 1.0 mm Bien Air, etc.
	RT-OR08	6.1 × 0.8 mm Star, NSK etc.		RT-OR09	6.1 × 7.6 × 7.2 mm Midwest, etc.

TUBES & CABLE

Photo	Model	Products Info	Photo	Model	Products Info
	RT-010-2	2 Holes Handpiece Tube		RT-010-7	Water-Air Syringe Tube
	RT-010-4	4 Holes Handpiece Tube		RT-010-EMS	EMS Scaler Tube (Non-Light)
	RT-010-6	6 Holes Handpiece Tube For Connector With Light		RT-010-SATE	Sateler Scaler Tube (Non-Light)
	RT-016	Power Box For Optic Handpiece		RT-330	Electric Cable For Marathon Micro Motor
	RT-016A	Digital Power Box For Optic Handpiece		RT-330B	Electric Cable For Marathon 50,000 RPM Brushless Motor
	RT-010-8	8 Holes Handpiece Tube For Bien Air Motor		RT-TUKV	Handpiece Tube For Kavo Dental Unit

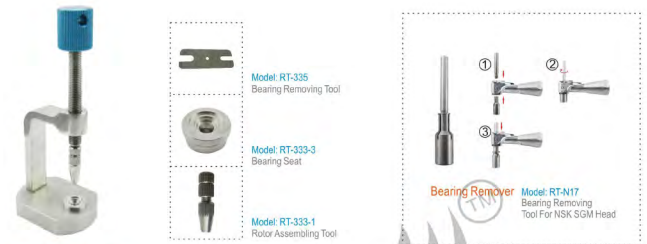
Photo	Model	Suitable For	Photo	Model	Suitable For
	RT-CBM2	Bien Air MC2 Motor 211 45 06 (Made in Germany)		RT-CBK190	Kavo K190-K200 0.076 0881 (Made in Germany)
	RT-CBM3	Bien Air MC3 Motor 211 75 08 (Made in Germany)		RT-210S	Saeshin Handpiece
	RT-210M	Marathon Handpiece			

REPAIRING TOOLS



-23-

REPAIRING TOOLS



Simple DIY Model: RT-333



MANOMETER



-24-

REPAIRING TOOLS >> WRENCH & EXPANDER

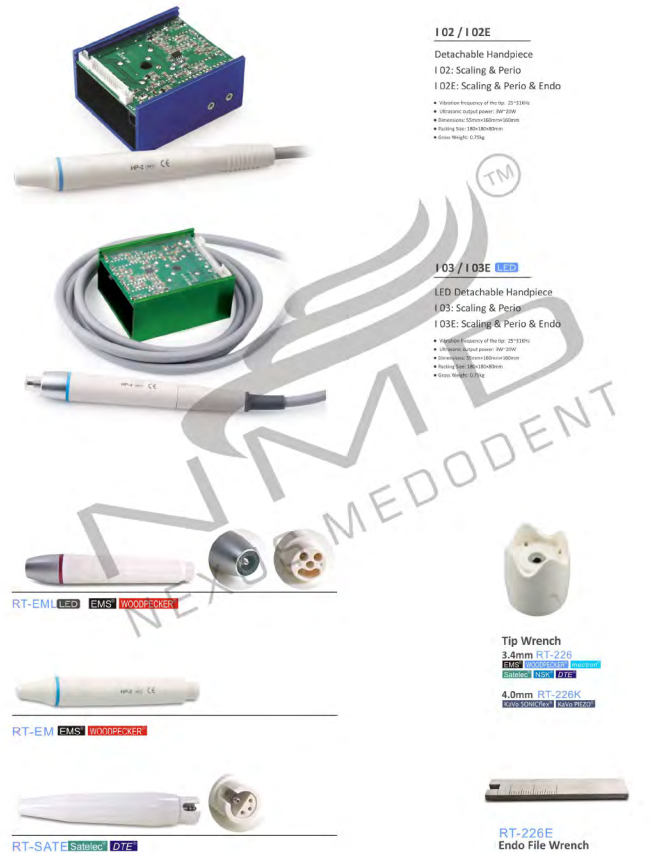


-25-

REPAIRING TOOLS >> WRENCH & EXPANDER



-26-

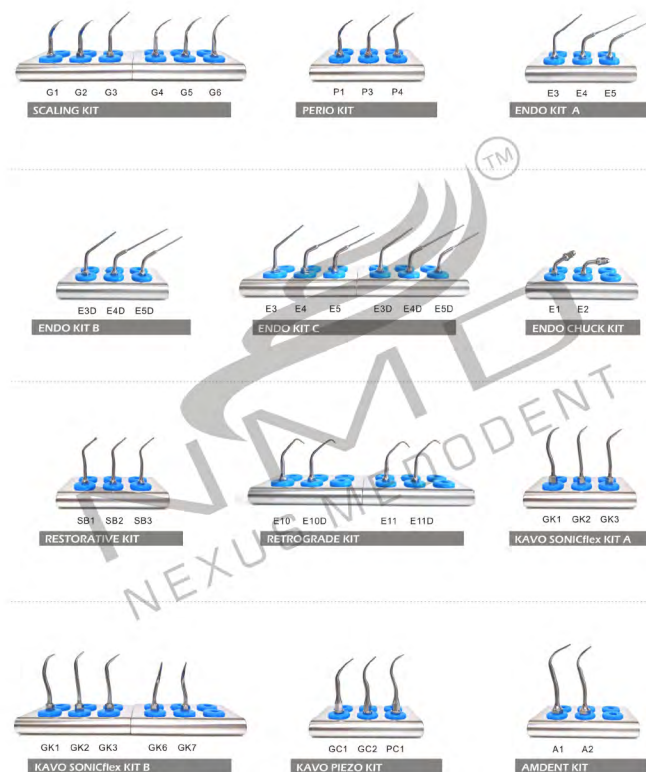
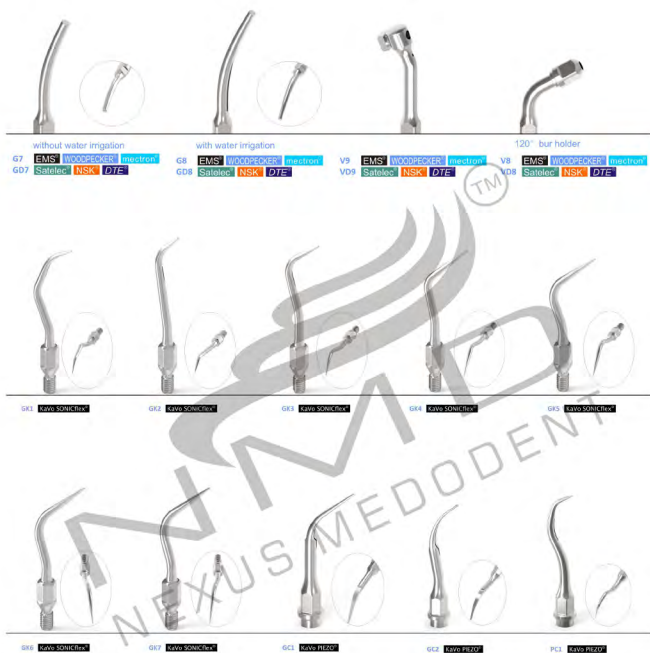


SCALER PART >> SCALING TUBES & TIPS



SCALER PART >> SCALING TIPS



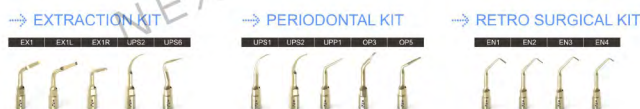




DENTAL UNIT PARTS >> PERIODONTAL



DENTAL SURGERY INSERTS >> SURGERY INSERT KITS



DENTAL UNIT PARTS

Photo	Model	Products Info	Photo	Model	Products Info
	DU-80201000	2 HP Control Block		DU-61201000	3 Way Manual HP Control Block
	DU-60302000	3 HP Control Block		DU-63203000	Air Pilot Routing Valve
	DU-60402000	4 HP Control Block		DU-62201000	Micro Switch for HP
	DU-60701000	Shuttle Valve Control Block		DU-61401000	Water Relay, Non-retraction
	DU-61001000	2 Way Manual HP Control B		DU-61801000	Shuttle Valve (3-1)
	DU-61301000	Water Relay, Non-retraction		DU-62002061	Arm Control Valve
	DU-63401233	Main Valve of Foot Control		DU-62801000	Needle Valve
	DU-60501000	Dual Masker Shut-Off Valve		DU-64001157	Strong Suction Valve
	DU-61001000	1 Way Manual HP Control Block		DU-62103070	Automatic HP Holder Valve

DENTAL UNIT PARTS

Photo	Model	Products Info	Photo	Model	Products Info
	DU-60802000	In-line Filter		DU-62401000	Needle Valve
	DU-61601000	Air Control Valve		DU-62501000	Needle Valve
	DU-61802000	Shuttle Valve (2-1)		DU-62603000	Water Flow Control Valve
	DU-62101068	Automatic HP Hold-Back Valve		DU-62901000	Mini Regulator
	DU-62703102	Mini Pinch Valve		DU-63201000	Toggle Routing Valve
	DU-64101159	Weak Suction Valve		DU-61702000	Check Valve
	DU-61701000	Check Valve		DU-61902000	Water Retraction Relay
	DU-61901000	Water Retractor		DU-63007213	Foot Control Toggle Valve Assembly
	DU-64201000	Air-Electric Switch		DU-63113214	Foot Control Toggle Valve Assembly

DENTAL UNIT PARTS

Photo	Model	Products Info	Photo	Model	Products Info
	DU-63001000	2-Way Toggle Valve		DU-23201101	Toggle (For Foot Control)
	DU-63003000	2-Way Momentary Toggle Valve		DU-23007101	Toggle (For Foot Control)
	DU-63101000	3-Way Toggle VALVE		DU-71701001	Barb 1/16"~1/16"
	DU-63102000	3-Way Momentary Toggle Valve		DU-71701002	Barb 1/16"~1/8"
	DU-63004000	2-Way Push Bottom Valve		DU-71701003	Barb 1/8"~1/8"
	DU-63104000	3-Way Push Bottom Valve		DU-71709025	Barb 1/16"~10-32"
	DU-24501013	Female Tee		DU-71709047	Barb 1/8"~10-32"
	DU-24502013	Female Cross		DU-60901000	Self-Contained Water Systems
	DU-71408012	Nylon Washer			